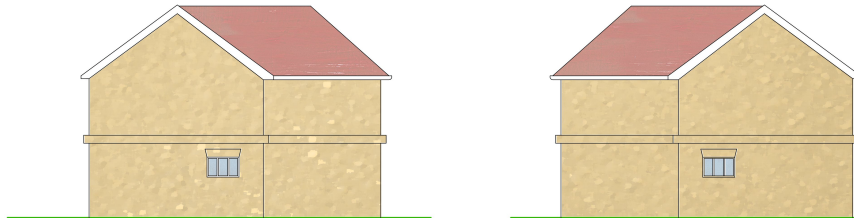
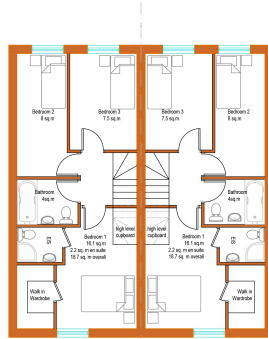
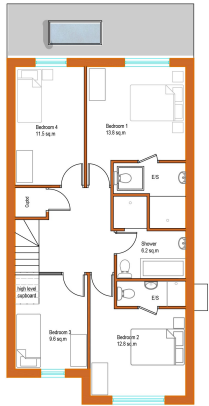




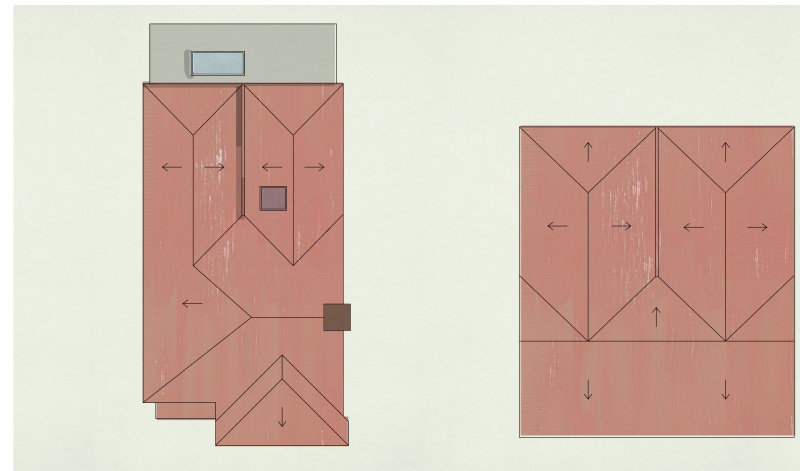
Front Elevations



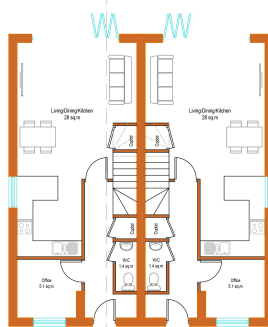
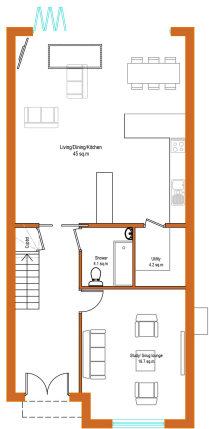
Side Elevations



First Floor Plans



Roof Plans



Ground Floor Plans



Rear Elevations



Side Elevations

SCHEDULE:

Semi-detached House  
Ground Floor - 44 sq.m.  
First Floor - 44 sq.m.  
Total - 88 sq.m.

In accordance with the Nationally Described Space Standards for a 3-bed 4-person 2-storey house of 86 sq.m. and rooms also comply with the relevant standards.

Detached house  
Ground Floor - 89 sq.m.  
First Floor - 76 sq.m.  
Total - 165 sq.m.

In accordance with the Nationally Described Space Standards for a 4-bed 6-person 2-storey house of 106 sq.m. and rooms also comply with the relevant standards.



C	20.08.20	KD	Bedroom 5 removed and plans and elevations altered accordingly.
B	02.07.20	PP	Amendments to the First Floor Plans; Bedroom 5 moved and pushed by 900mm, shower room and en suite bathrooms moved towards the Bedroom 1. Chimney moved. Changes shown in the elevations
A	02.07.20	KD	Amended following discussion with local authority

**DESIGNSCAPE CONSULTANCY LTD**  
Architecture • Urban Design  
The Landway, Bearsted, Maidstone  
+44 (0)1622 4460  
(0)1622 735977  
sig@scapesconsultancy.co.uk

**Maher**  
Project  
Ashdown, Water Lane, Ospringe, Faversham ME13 8TT

Drawing

Proposed Elevations					
Scale	Drawn	Checked	Date	Org. No.	Rev.
1:100 @ A1	KD	KH	Feb 20	448/102	C